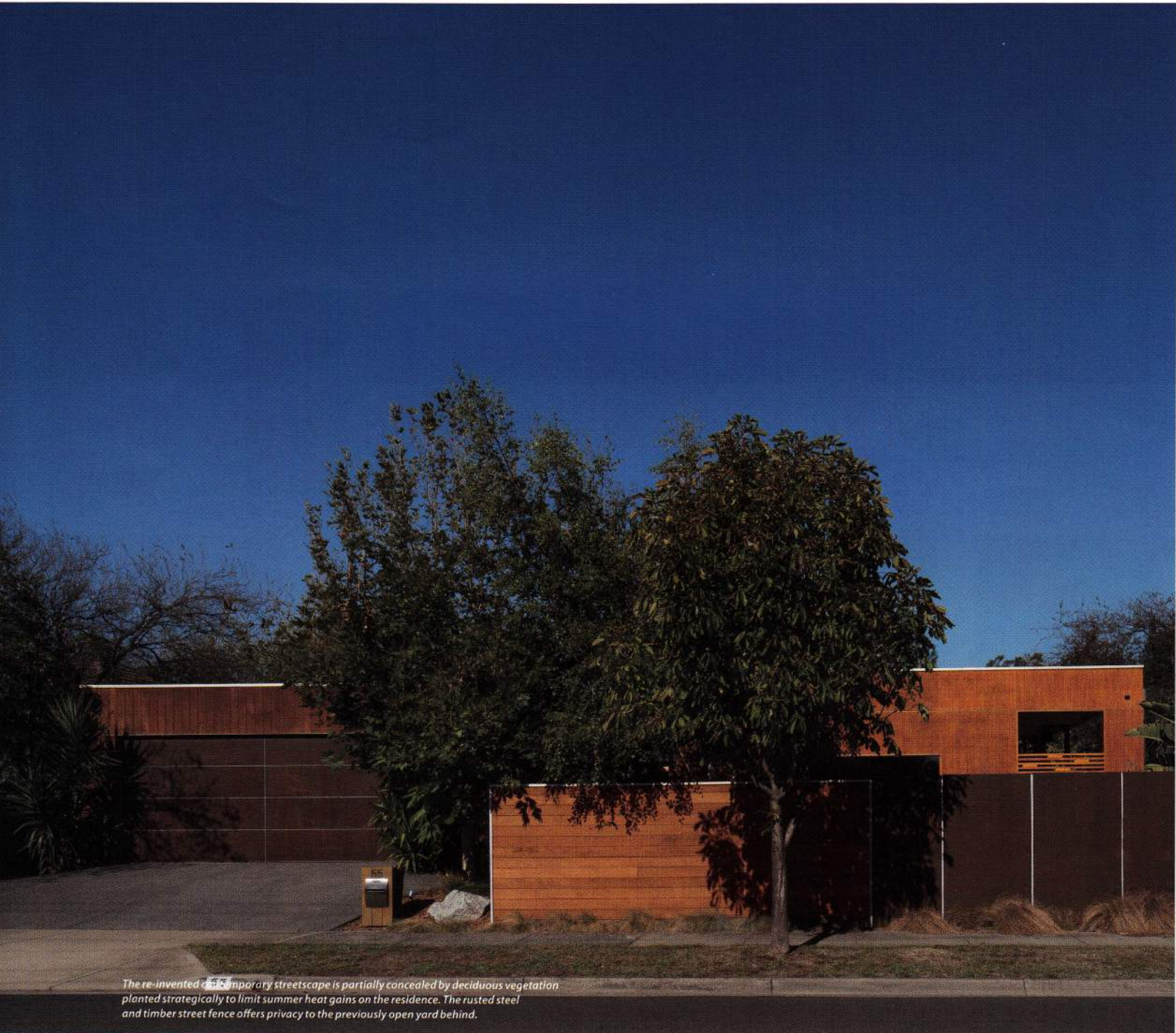


42+43

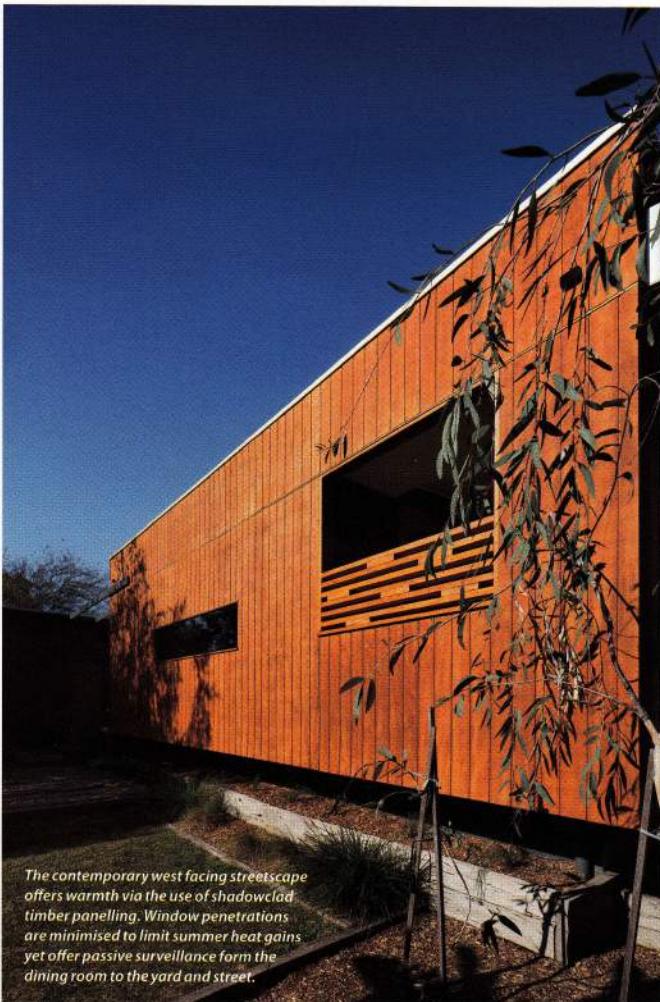
Winner

BEST ENVIRONMENTALLY SUSTAINABLE DESIGN - RESIDENTIAL



The re-invented and temporary streetscape is partially concealed by deciduous vegetation planted strategically to limit summer heat gains on the residence. The rusted steel and timber street fence offers privacy to the previously open yard behind.

111 10



The contemporary west facing streetscape offers warmth via the use of shadowclad timber panelling. Window penetrations are minimised to limit summer heat gains yet offer passive surveillance from the dining room to the yard and street.

Designer: Maxa Design Pty Ltd

Phone: (03) 9013 0449

Web: www.maxadesign.com.au

Builder: Owner-Builder

Photographer: Chris Neylon

Nunawading

In response to site and budgetary constraints, a poorly functioning old home has been completely revitalised by a series of minimal targeted interventions. This sustainable design solution harnessed the full potential of existing materials and structure to improve the home for the lowest possible capital and environmental cost.

Problematic orientation and overshadowing determined that sustainable design objectives had to be achieved by alternative means. This strategy focused on materials, insulation, waste minimisation, efficient renewable energy, glazing, air-tightness, rainwater harvesting and conservation. Wherever possible materials and structure were retained or re-used. Additional materials were recycled, natural, non-toxic and sustainably manufactured.

A constrained siting and conservative budget combined to challenge the designer to source alternative methods for a sustainable outcome. Creative and imaginative use of salvaged and recycled timber to serve as structural, serviceable and aesthetic purposes underpin a worthy and winning combination for this award.